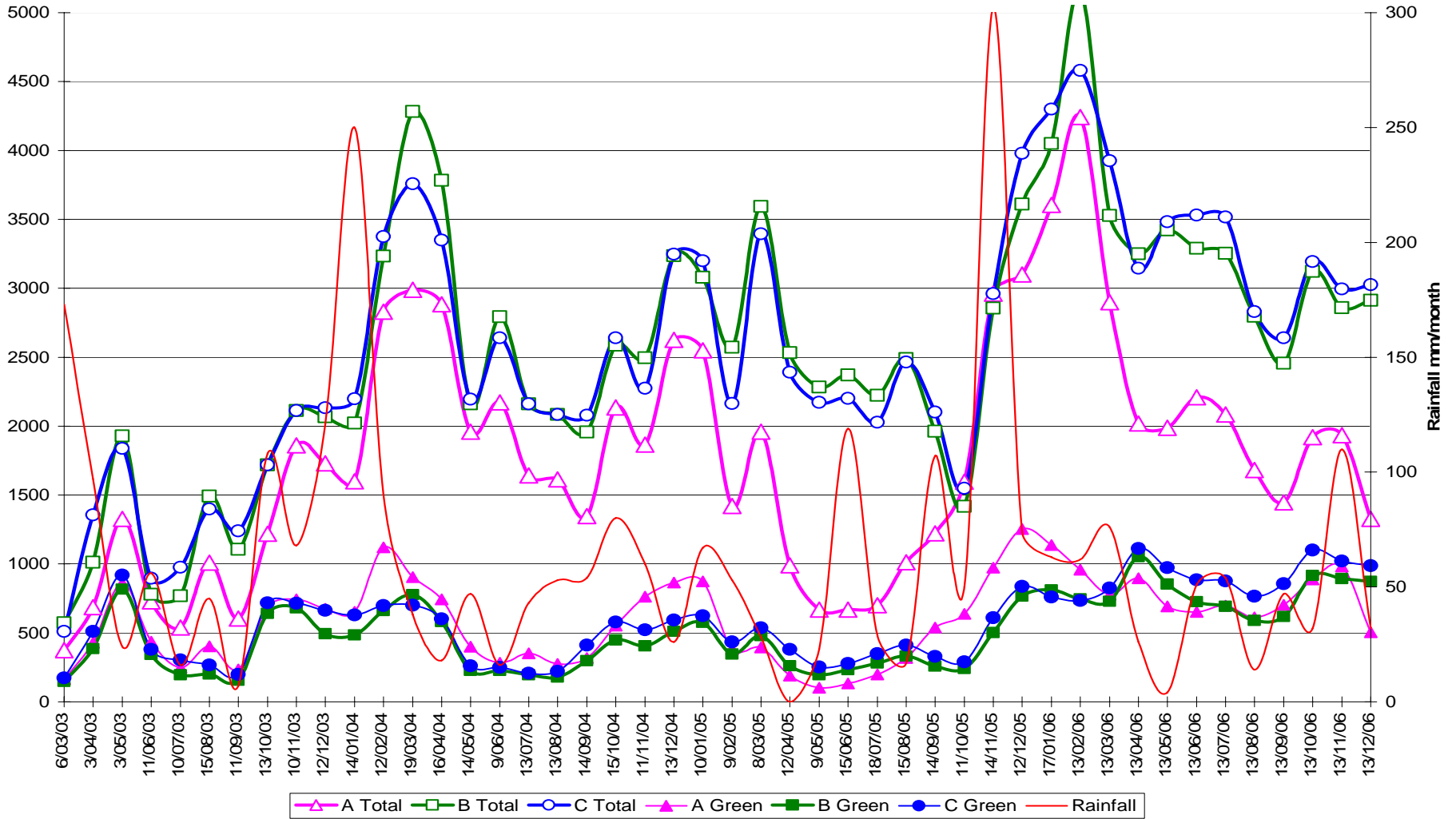
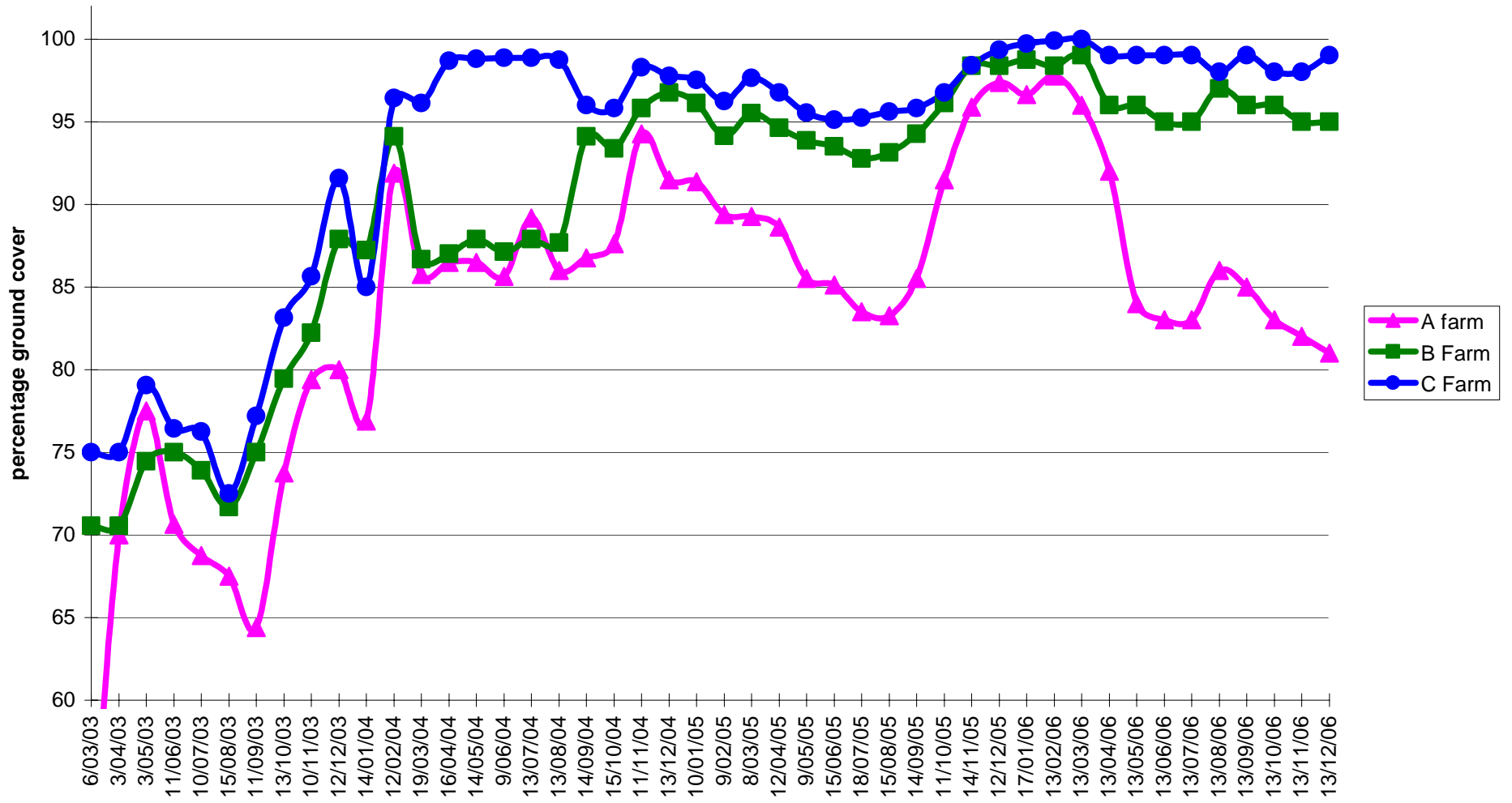


Median Pasture Mass Kg/Ha DM



Ground Cover



Farm	Year	PH Water	PH CaCl2	Nitrate Nitrogen	Sulfate Sulfur	P Colwell	Potas	Cal	Mg	Alum	Sodium	Chloride	Elect Conduc	Cation Exch Cap	Calciu /MgRatio	Alum Satu	Sodium Pct Cations	Elec Cond Sat Ext	Organic Carbon	PBI
------	------	----------	----------	------------------	----------------	-----------	-------	-----	----	------	--------	----------	--------------	-----------------	-----------------	-----------	--------------------	-------------------	----------------	-----

A	2001	5.6	4.9	17.4	14.5	29.5	0.3	3.4	1.8	0.1	0.6	117.5	0.1	6.3		1.7	9.3	1.2		
B	2001	5.9	5.1	5.2	6.5	14.5	0.3	4.7	2.3	0.1	0.1	10.0	0.0	7.4		1.0	1.2	0.3		
C	2001	5.8	5.1	13.4	8.0	21.0	0.3	5.6	2.6	0.1	0.2	27.5	0.1	8.7		1.6	2.9	0.6		

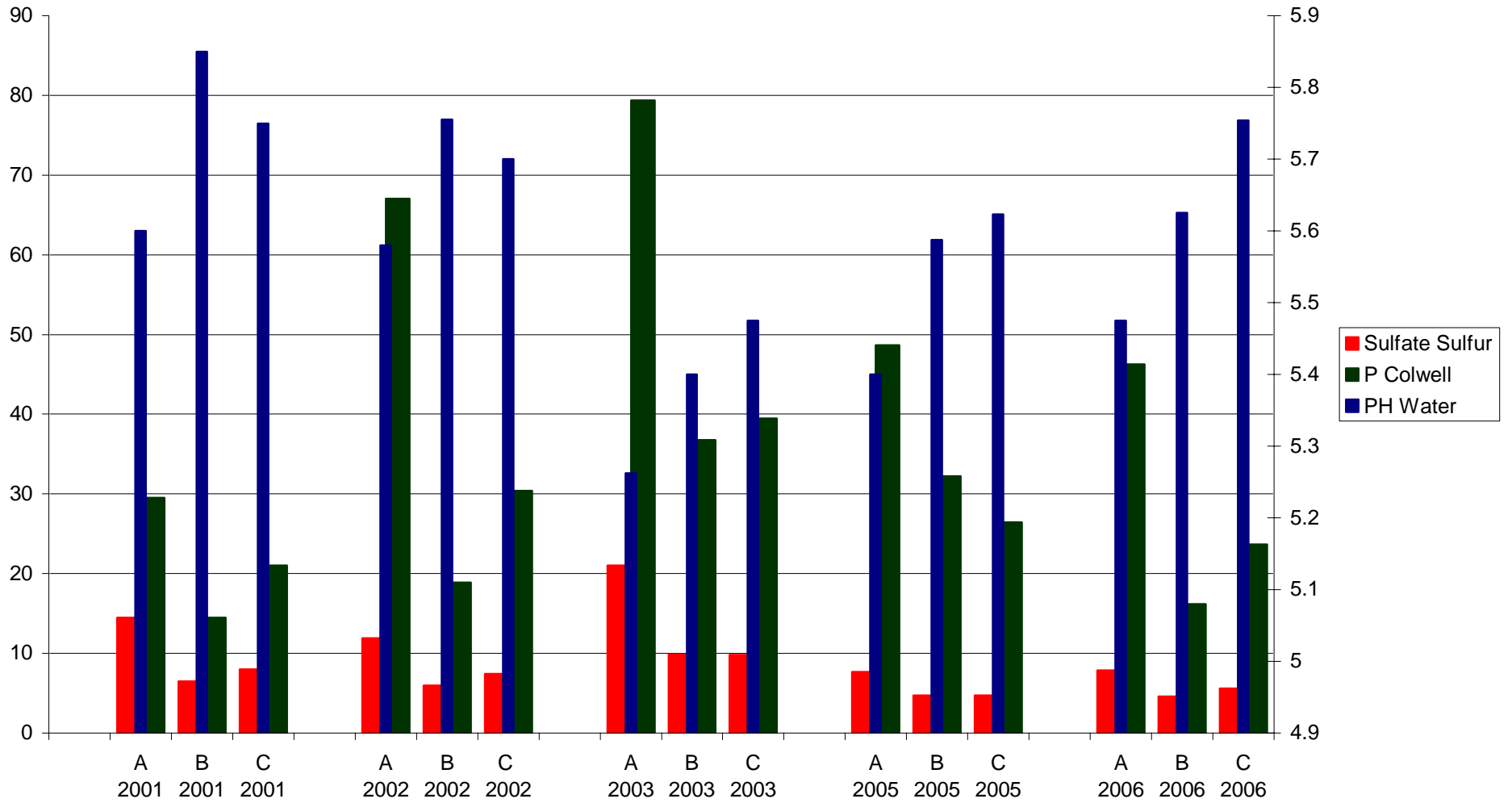
A	2002	5.6	4.7	18.7	11.9	67.0	0.5	4.2	1.6	0.1	0.1	28.1	0.1	6.6		1.4	1.4	0.8		
B	2002	5.8	4.8	6.6	6.0	18.9	0.3	3.2	1.3	0.1	0.1	17.1	0.1	4.9		1.5	1.4	0.5		
C	2002	5.7	4.8	6.2	7.4	30.4	0.4	4.6	2.3	0.1	0.2	48.7	0.1	7.6		2.0	2.5	0.7		

A	2003	5.3	4.7	53.3	21.0	79.4	0.6	3.9	1.7	0.1	0.1	46.3	0.2	6.4		2.2	2.0	1.6		
B	2003	5.4	4.8	27.1	9.9	36.8	0.4	3.4	1.4	0.1	0.1	36.1	0.1	5.3		1.7	1.3	0.9		
C	2003	5.5	4.9	19.5	9.8	39.4	0.4	4.7	2.5	0.1	0.2	77.2	0.1	7.9		2.2	2.5	1.1		

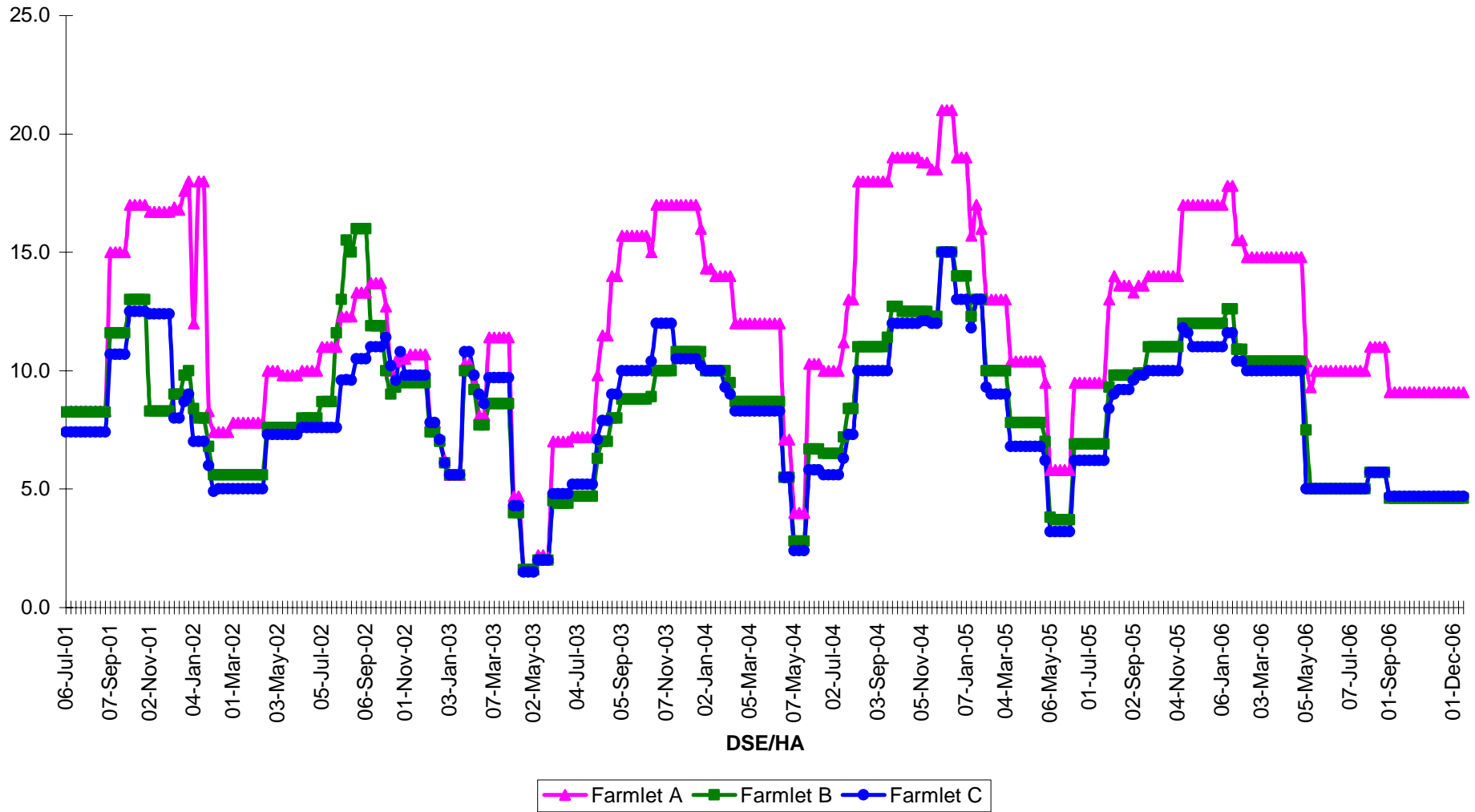
A	2005	5.4	4.6	16.0	7.7	48.6	0.4	3.0	1.3	0.1	0.2	19.5	0.1	5.0	2.4	2.9	4.3	0.8	1.9	78.8
B	2005	5.6	4.8	8.2	4.7	32.3	0.3	2.9	1.3	0.1	0.2	21.1	0.1	4.8	2.3	1.2	4.6	0.5	1.9	66.4
C	2005	5.6	4.8	6.1	4.7	26.5	0.3	4.1	2.2	0.1	0.2	20.3	0.1	6.9	2.1	2.1	4.0	0.5	2.1	83.1

A	2006	5.5	4.6	5.5	7.9	46.3	0.3	3.1	1.3	0.2	0.1	12.3	0.1	4.9	2.4	4.0	1.9	0.5	2.1	77.5
B	2006	5.6	4.7	6.1	4.6	16.2	0.3	2.9	1.3	0.1	0.1	11.3	0.1	4.7	2.4	2.6	1.6	0.5	2.0	60.5
C	2006	5.8	4.8	4.0	5.6	23.7	0.4	4.3	2.5	0.1	0.1	16.8	0.1	7.4	2.1	3.3	1.8	0.5	2.3	81.1

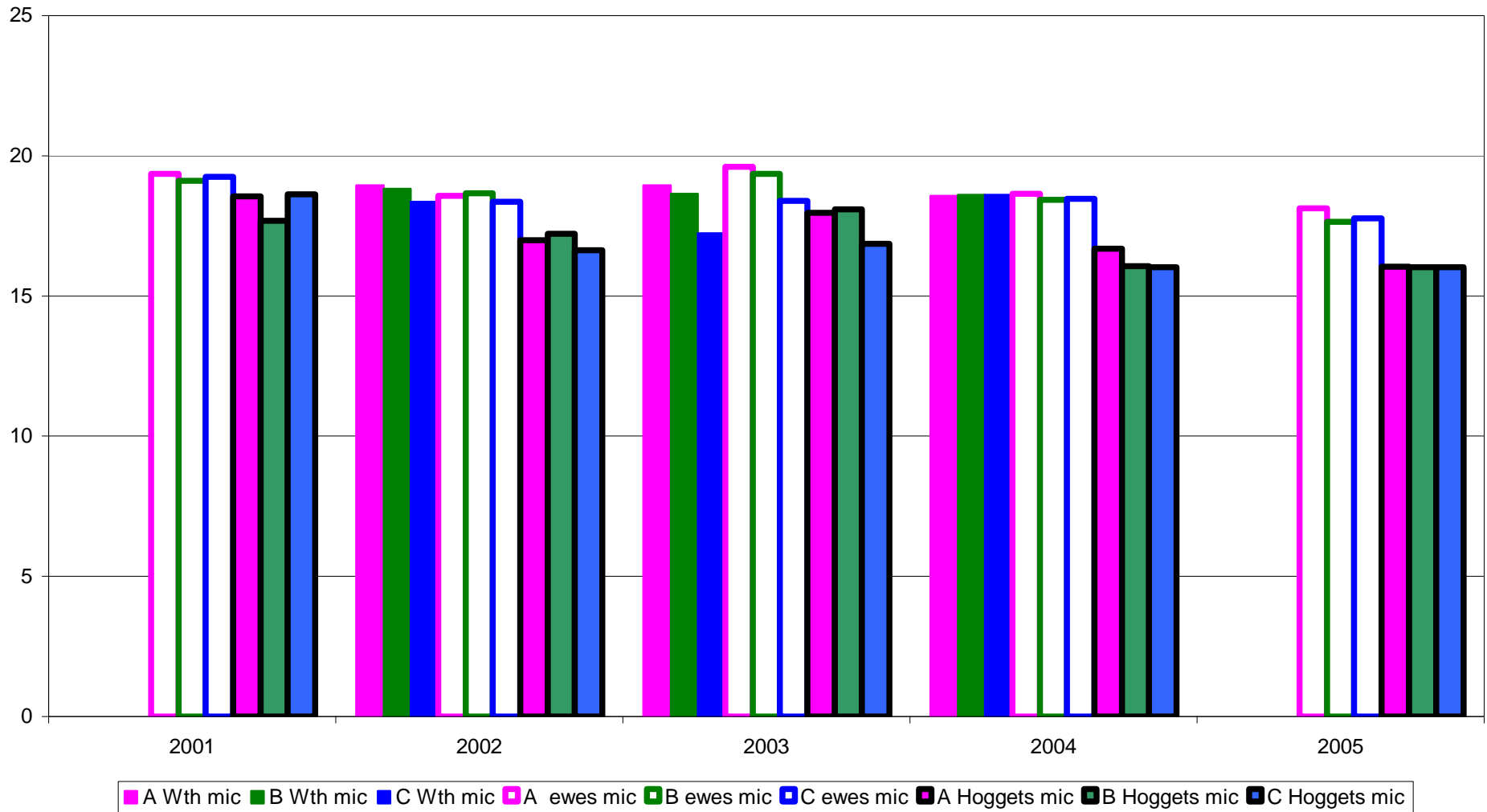
Soil tests



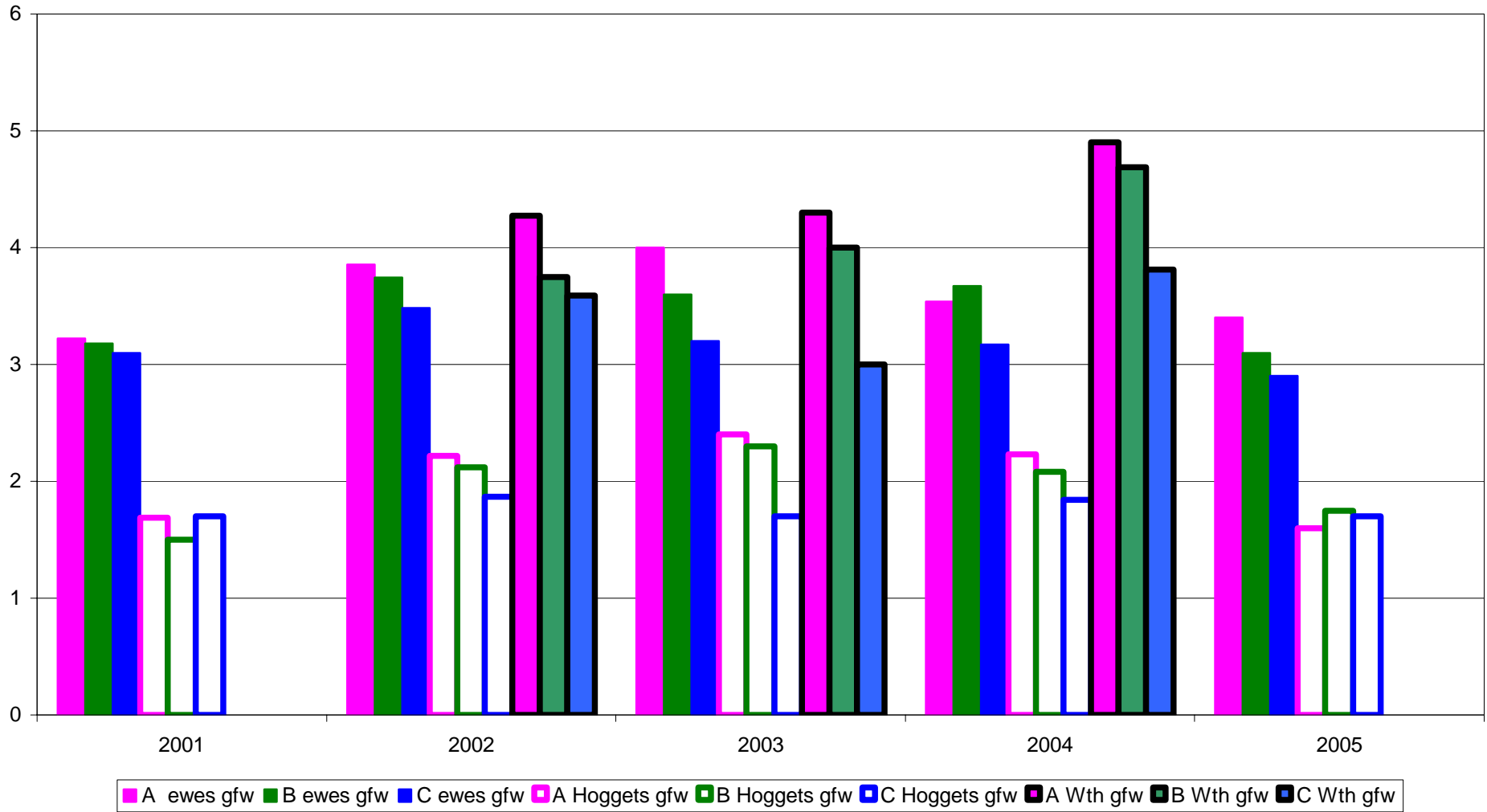
Stocking rate



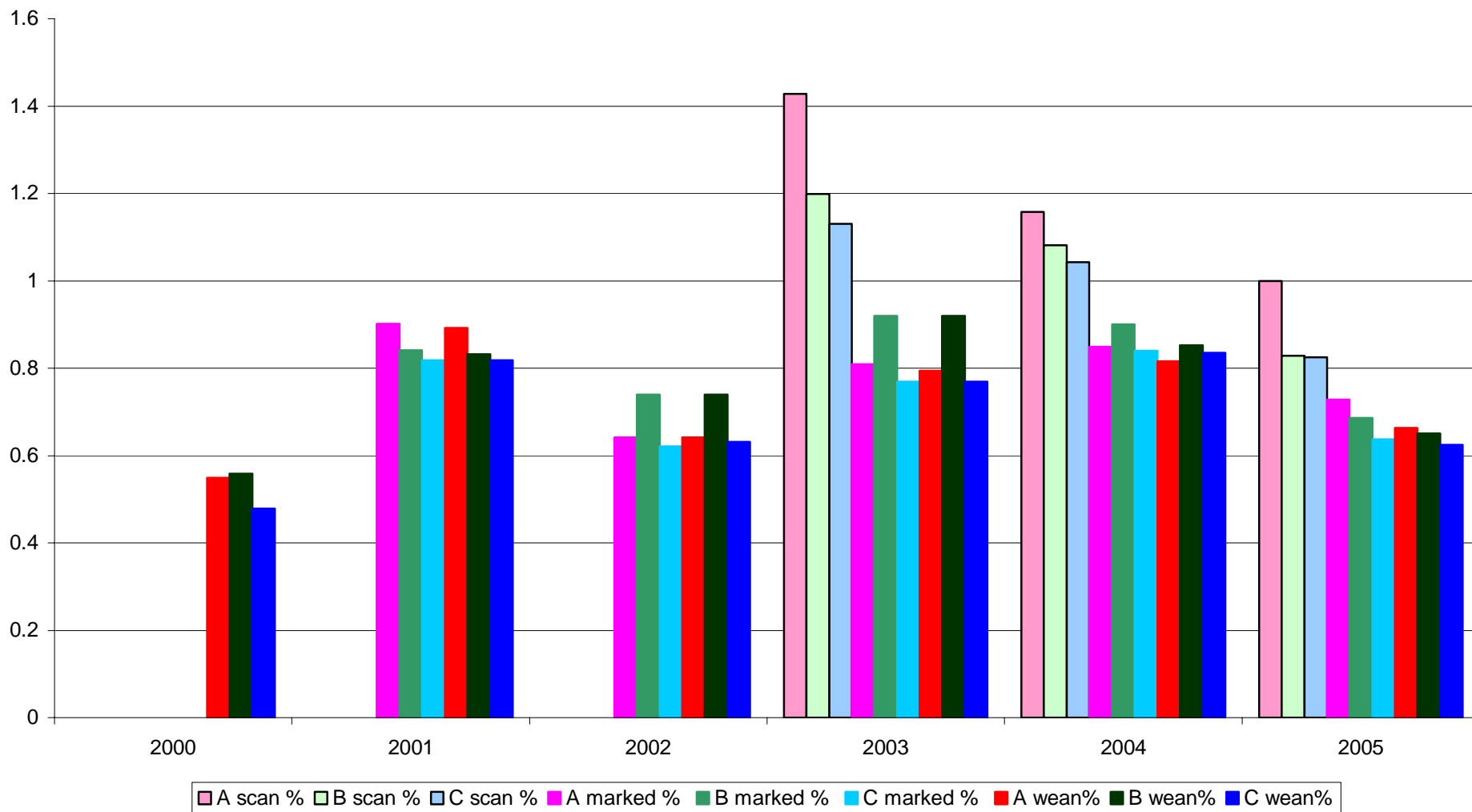
Average fibre diameter



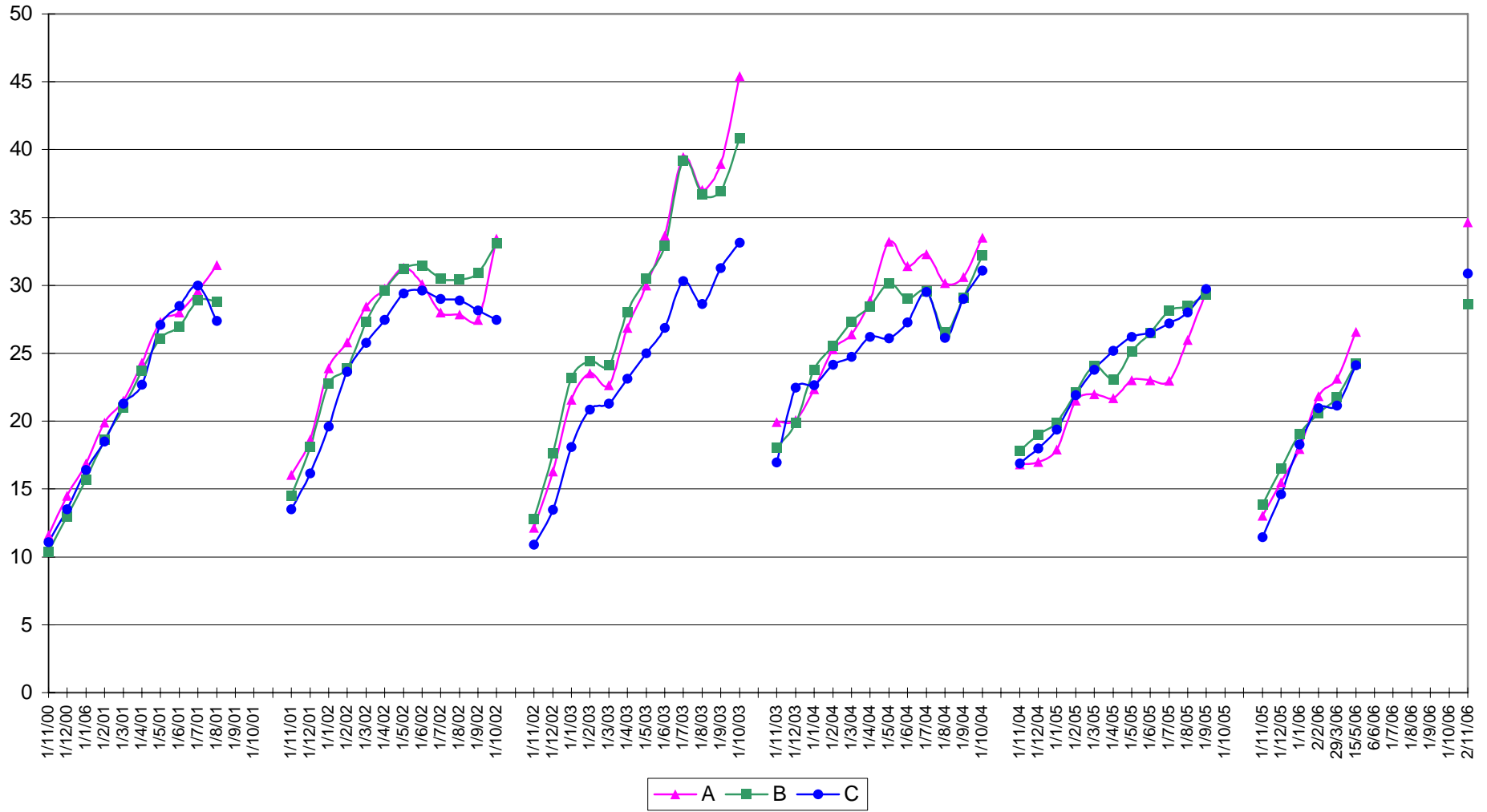
Fleece weight



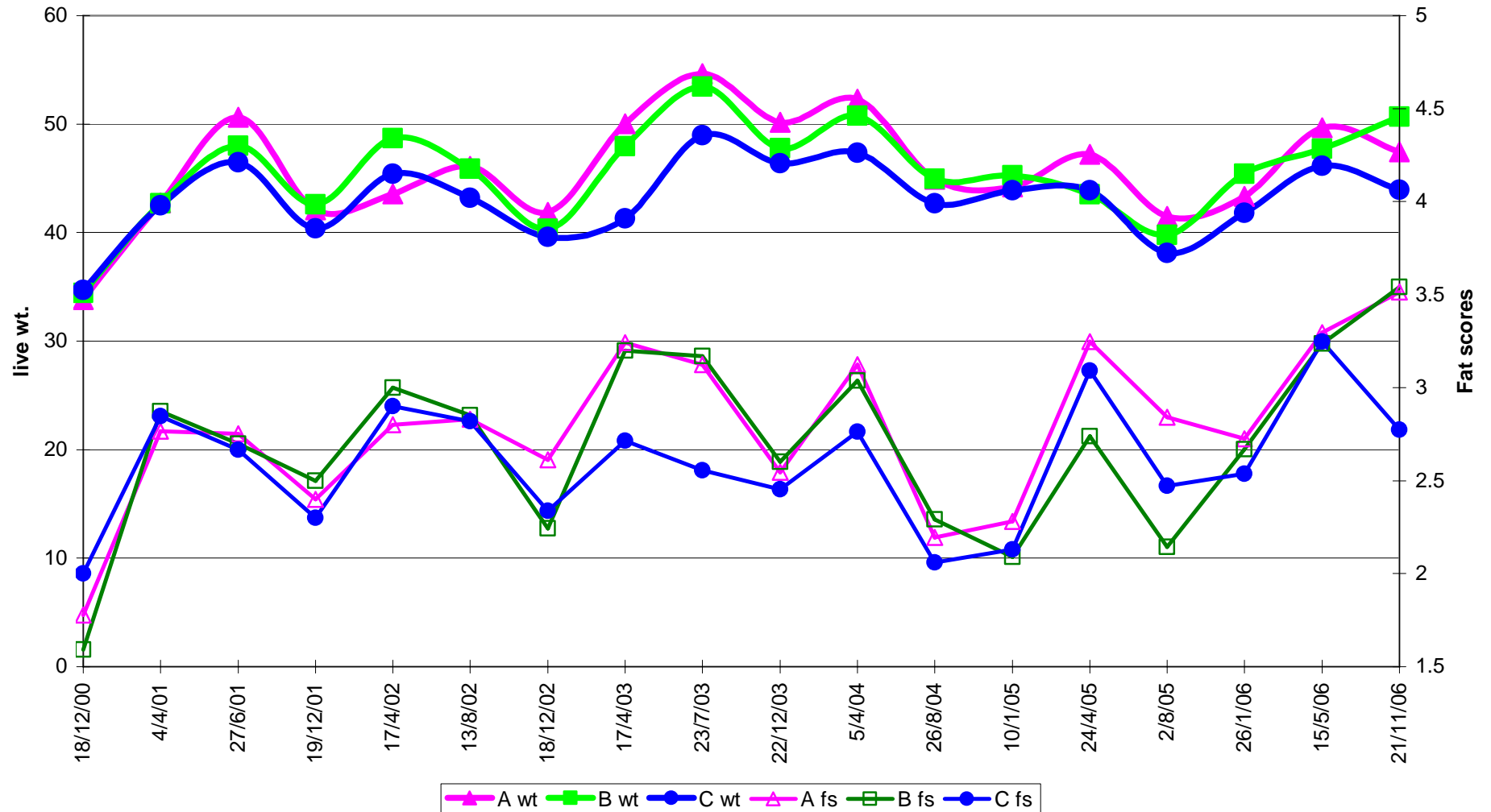
lambing %



hogget weights

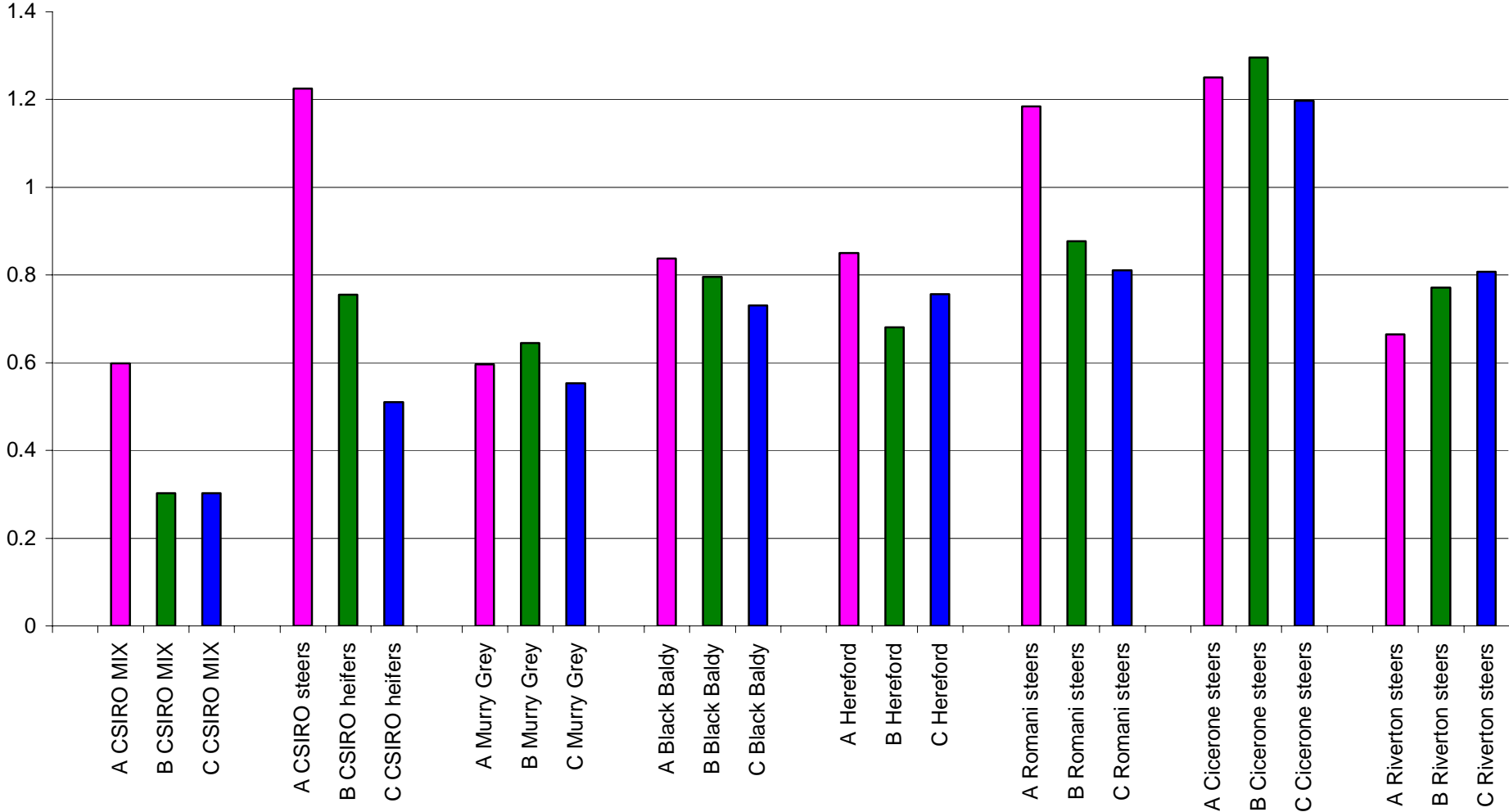


Ewes Wt. & FS

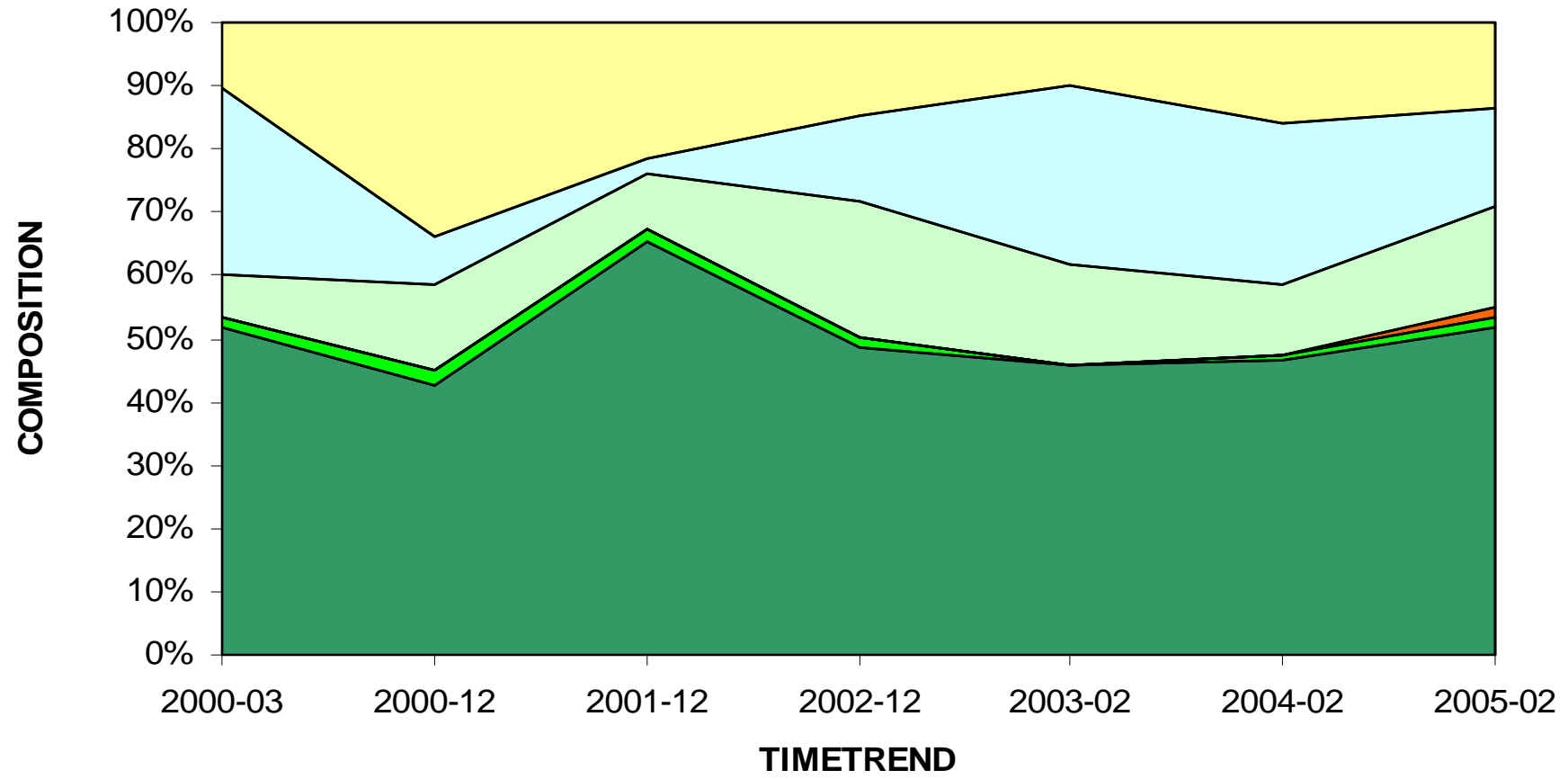


	January	February	March	April	May	June	July	August	September	October	November	December	Total
1998	107	83	60	41	47	56	58	57	54	73	83	86	805
1999	100	70	87	50	14	46	39	48	65	171	128	95	913
2000	22	35	103	30	23	7	59	44	21	99	200	98	741
2001	57	43	150	17	40	11	59	37	42	63	101	56	676
2002	107	69	101	1	4	39	6	37	47	33	69	115	628
2003	15	50	173	97	24	56	16	45	7	108	68	121	780
2004	218	90	38	18	47	16	43	53	54	80	76	110	843
2005	67	53	28	0	23	119	34	17	107	67	302	87	904
2006	63	62	76	26	4	51	54	14	47	32	110	32	571

Cattle wt. Gain kg/day

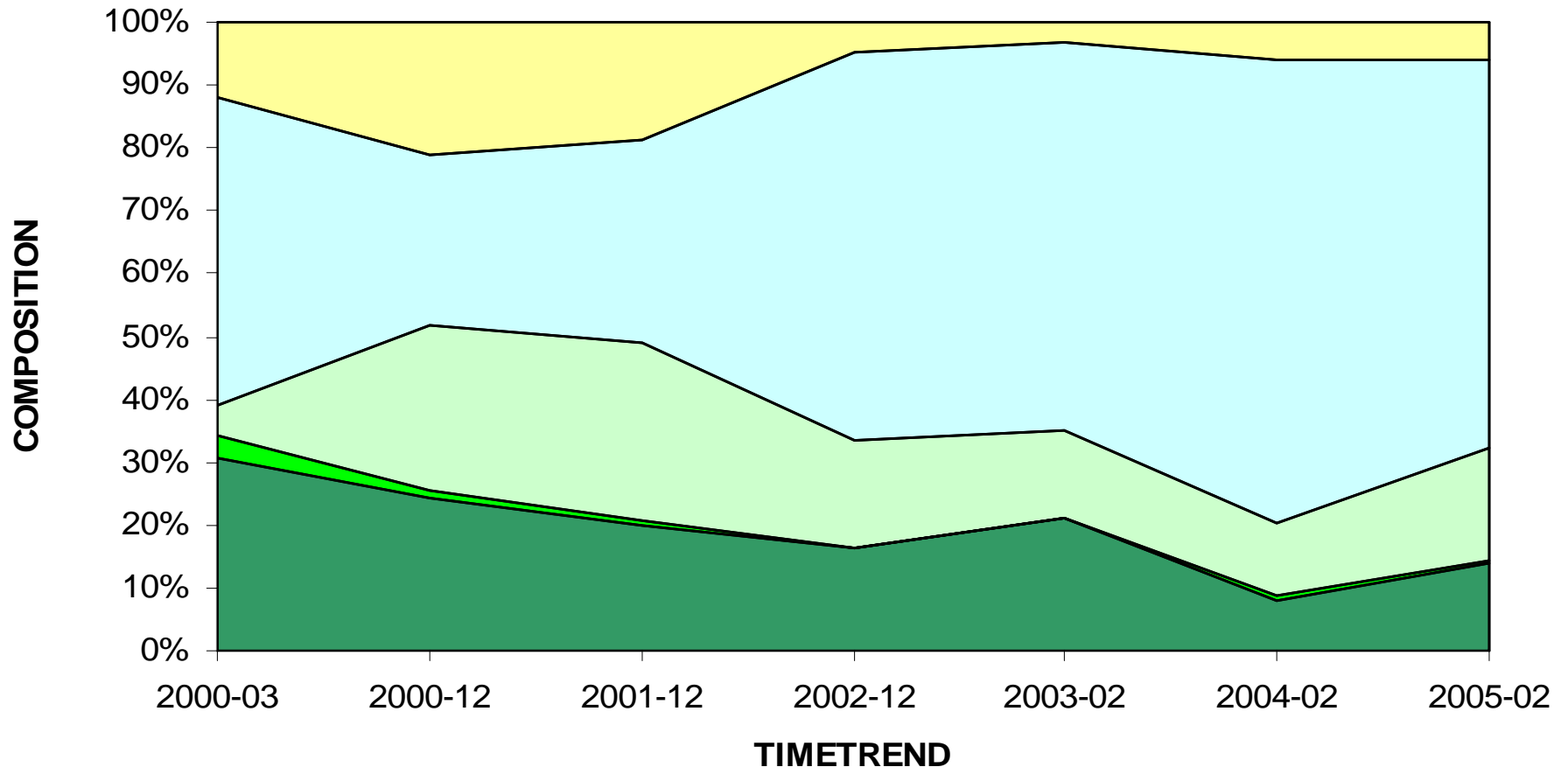


FARMLET A



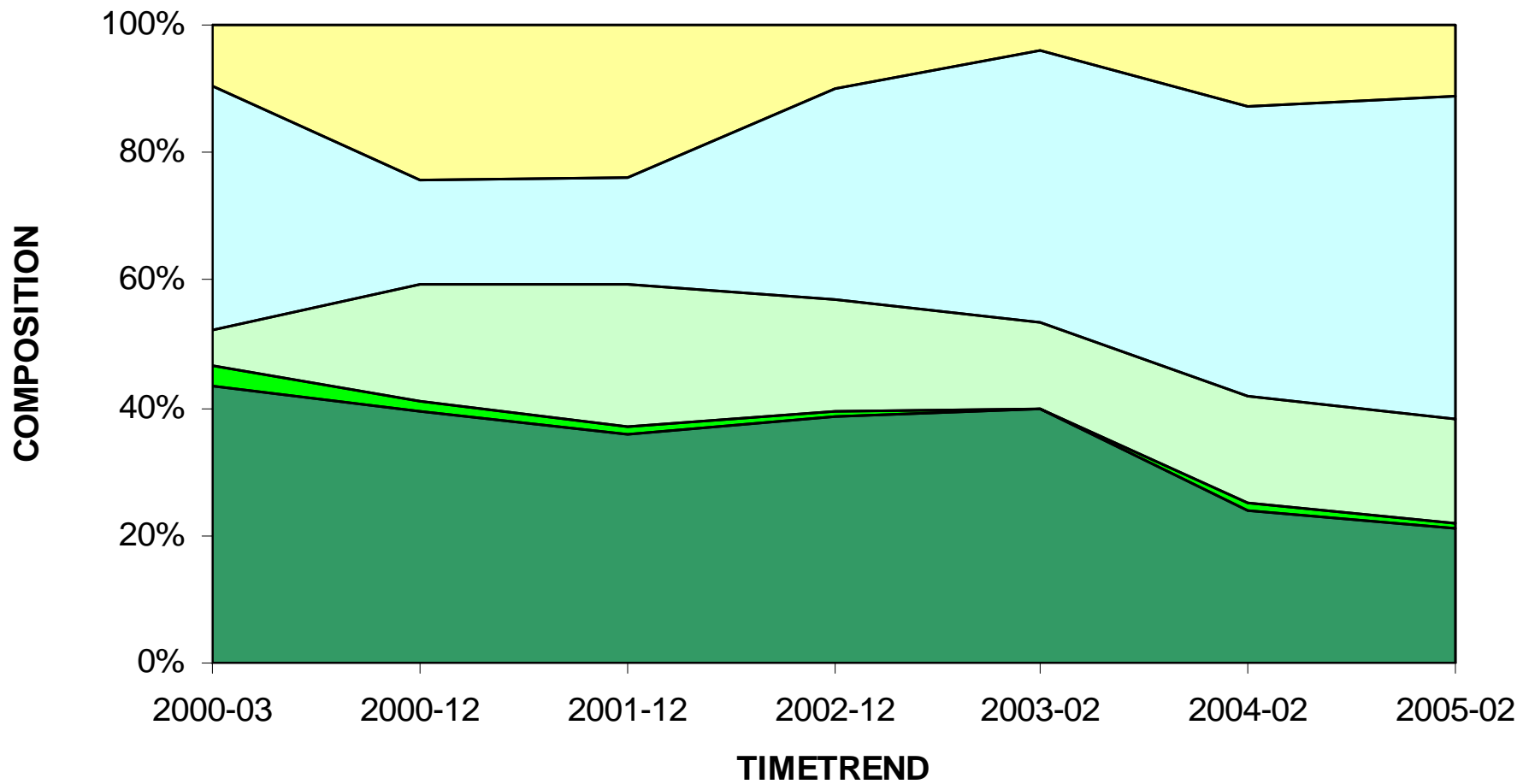
■ SownGrasses ■ Legumes ■ Chicory ■ IntroducedGrasses ■ NativeGrasses ■ WeedySpecies

FARMLET B



■ SownGrasses ■ Legumes ■ IntroducedGrasses ■ NativeGrasses ■ WeedySpecies

FARMLET C



■ SownGrasses ■ Legumes □ IntroducedGrasses □ NativeGrasses □ WeedySpecies

Gross Margins

